

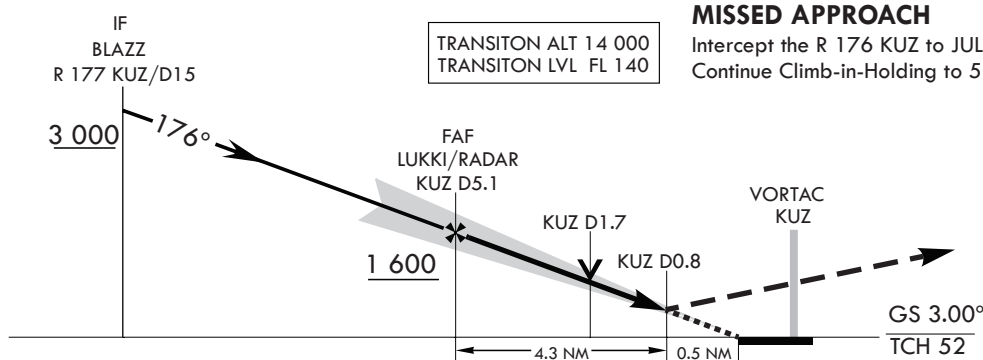
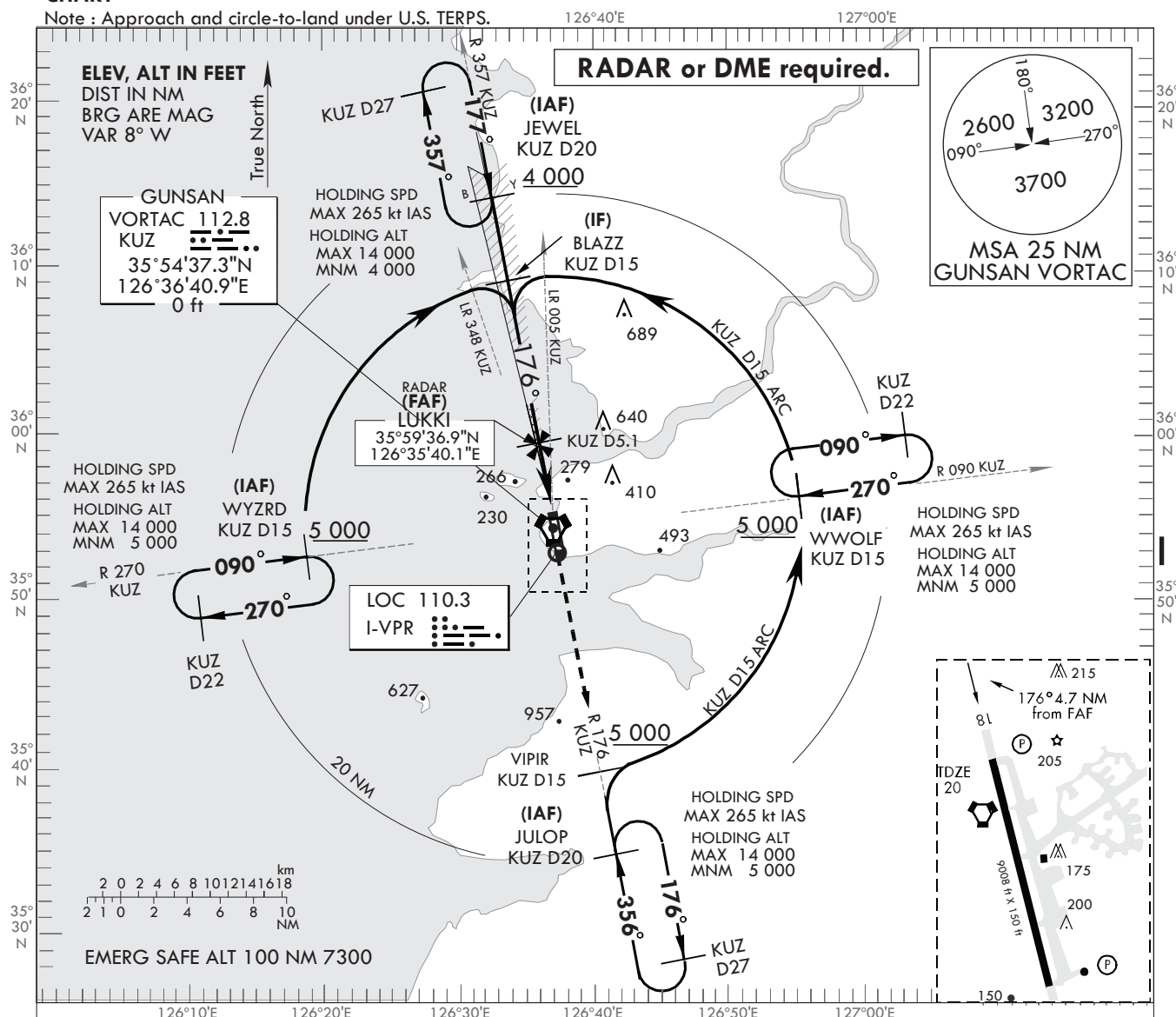
**INSTRUMENT
APPROACH
CHART**

AERODROME ELEV 29 ft
HIGHEST ELEV TDZ 20 ft

APP 124.1 292.65
TWR 126.5 292.3

GUNSAN/Gunsan(RKJK)
ILS or LOC/DME
RWY 18

Note : Approach and circle-to-land under U.S. TERPS.



CATEGORY	A	B	C	D
S-ILS 18*	218 / 24	200	(200-1/2)	
S-LOC 18**	500 / 24 482 (500 - 1/2)		500 / 50 482 (500 - 1)	
CIRCLING	640 - 1 611 (700 - 1)	680 - 1 651 (700 - 1)	680 - 1 3/4 651 (700 - 1 3/4)	760 - 2 1/4 731 (800 - 2 1/4)

* When ALS INOP, Increase RVR to 40, VIS to 3/4 mile.

** When ALS INOP, Increase CAT AB RVR to 55, VIS to 1 mile, CAT CD VIS to 1 3/8 mile.

Change : Amended chart symbols.

GUNSAN (RKJK)
ILS or LOC/DME
RWY 18

AERONAUTICAL DATA TABULATION

ILS or LOC/DME approach to RWY 18 from JEWEL, WWOLF, JULOP, WYZRD	
Fix/point	Coordinates
JULOP(IAF)	35°34'59.5"N 126°41'34.0"E
VIPIR	35°39'54.0"N 126°40'20.9"E
WWOLF(IAF)	35°56'25.7"N 126°55'01.0"E
WYZRD(IAF)	35°52'46.1"N 126°18'21.7"E
JEWEL(IAF)	36°14'19.1"N 126°32'12.6"E
BLAZZ(IF)	36°09'23.7"N 126°33'19.9"E
LUKKI(FAF)	35°59'36.9"N 126°35'40.1"E
D1.7 KUZ	-
D0.8 KUZ	-
THR RWY 18	35°54'57.21"N 126°36'46.83"E

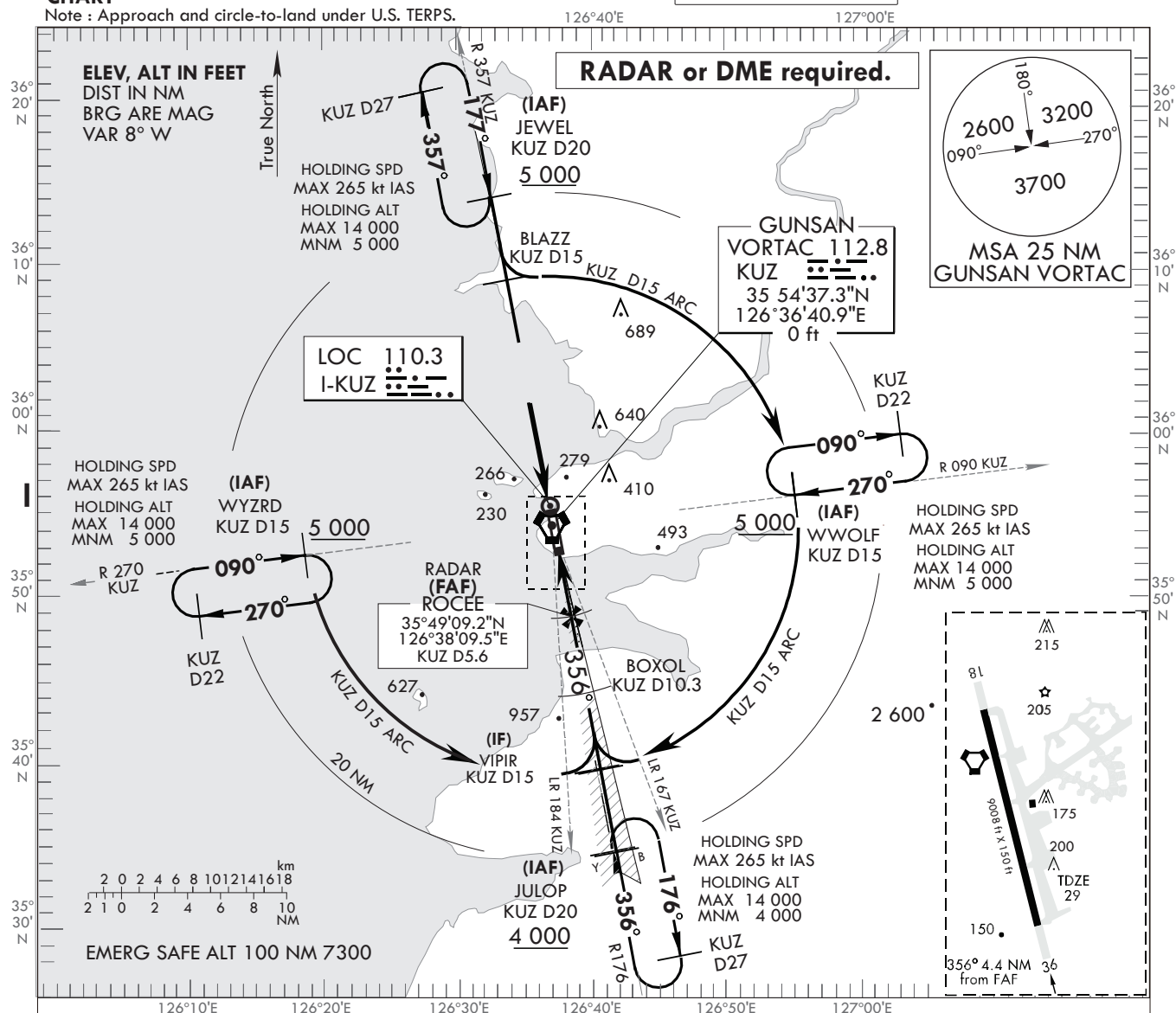
**INSTRUMENT
APPROACH
CHART**

AERODROME ELEV 29 ft
HIGHEST ELEV TDZ 29 ft

APP 124.1 292.65
TWR 126.5 292.3

GUNSAN/Gunsan(RKJK)
ILS or LOC/DME
RWY 36

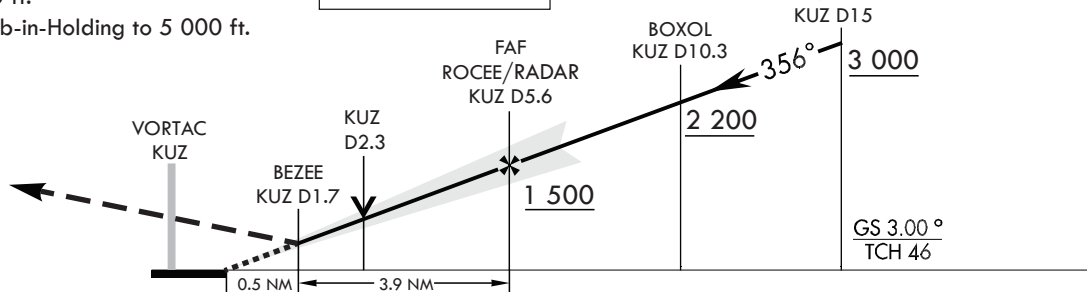
Note : Approach and circle-to-land under U.S. TERPS.



MISSED APPROACH

Intercept the R 357 KUZ to JEWEL and hold at 5 000 ft.
Continue Climb-in-Holding to 5 000 ft.

TRANSITON ALT 14 000
TRANSITON LVL FL 140



CATEGORY	A	B	C	D
S-ILS 36*	229 / 24	200	(200-1/2)	
S-LOC 36**	440 / 24 411 (500 - 1/2)	440 / 40 411 (500 - 3/4)		
CIRCLING	640 - 1 611 (700 - 1)	680 - 1 651 (700 - 1)	680 - 1 3/4 651 (700 - 1 3/4)	760 - 2 1/4 731 (800 - 2 1/4)

* When ALS INOP, Increase RVR to 40 VIS to 3/4 mile.

** When ALS INOP, Increase CAT AB RVR to 55 VIS to 1 mile, CAT CD RVR to 60 VIS to 1 1/8 miles.

Change : Amended chart symbols.

GUNSAN (RKJK)
ILS or LOC/DME
RWY 36

AERONAUTICAL DATA TABULATION

ILS or LOC/DME approach to RWY 36 from JEWEL, WWOLF, JULOP, WYZRD	
Fix/point	Coordinates
JEWEL(IAF)	36°14'19.1"N 126°32'12.6"E
BLAZZ	36°09'23.7"N 126°33'19.9"E
WWOLF(IAF)	35°56'25.7"N 126°55'01.0"E
WYZRD(IAF)	35°52'46.1"N 126°18'21.7"E
JULOP(IAF)	35°34'59.5"N 126°41'34.0"E
VIPIR(IF)	35°39'54.0"N 126°40'20.9"E
BOXOL	35°44'31.3"N 126°39'15.3"E
ROCEE(FAF)	35°49'09.2"N 126°38'09.5"E
D2.1 KUZ	-
BEZEE	35°52'59.0"N 126°37'14.9"E
THR RWY 36	35°53'29.83"N 126°37'07.61"E

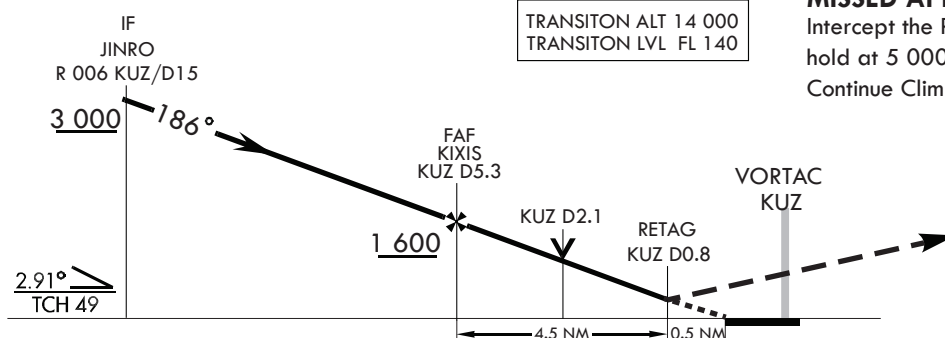
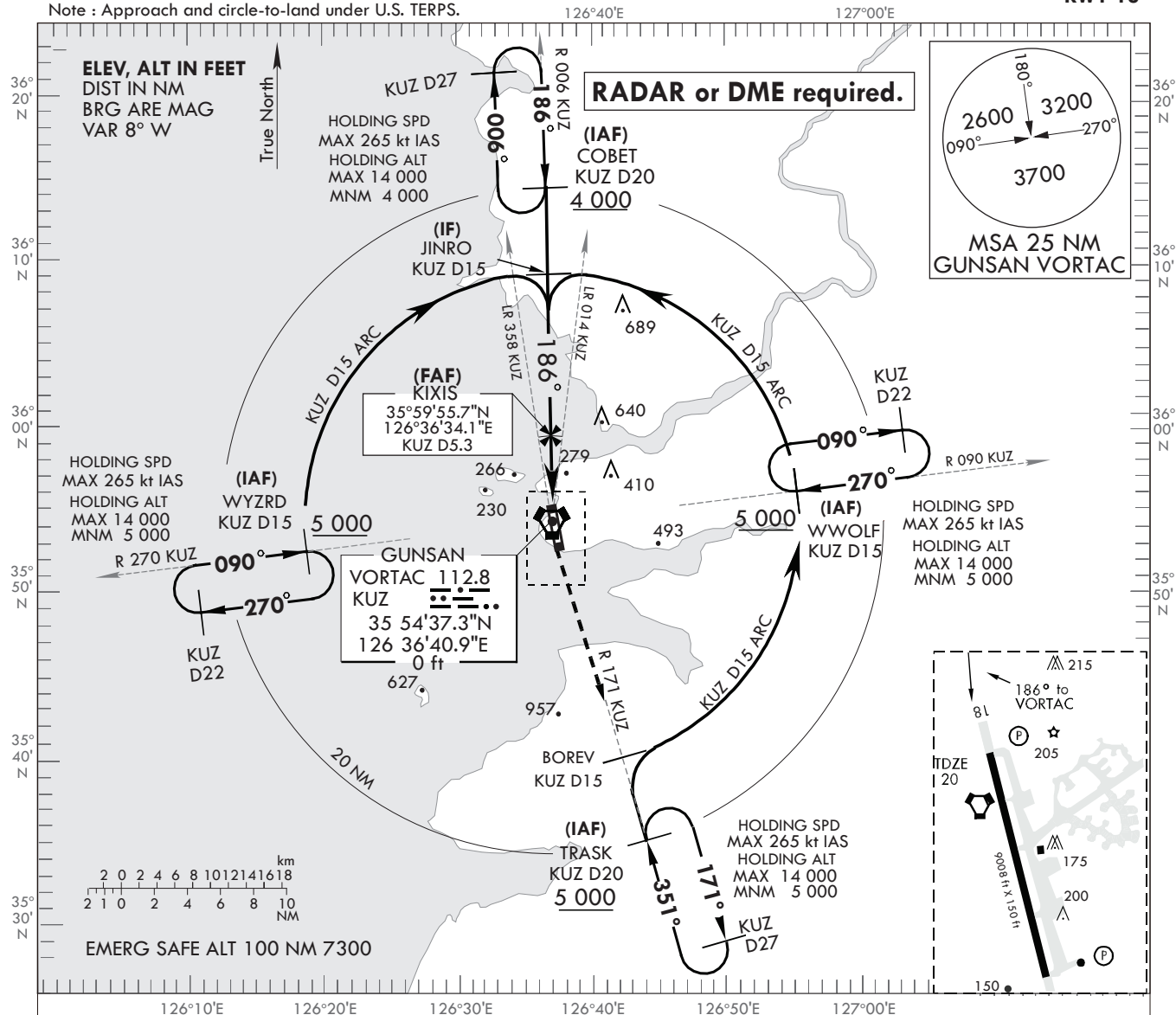
**INSTRUMENT
APPROACH
CHART**

AERODROME ELEV 29 ft
HIGHEST ELEV TDZ 20 ft

APP 124.1 292.65
TWR 126.5 292.3

GUNSAN/Gunsan(RKJK)
TACAN or VOR/DME
RWY 18

Note : Approach and circle-to-land under U.S. TERPS.



MISSSED APPROACH

Intercept the R 171 KUZ to TRASK and hold at 5 000 ft.

Continue Climb-in-Holding to 5 000 ft.

CATEGORY	A	B	C	D
S-18*	620 / 24 602 (600 - 1/2)		620 - 1 3/8 602 (600 - 1 3/8)	
CIRCLING	640 - 1 611 (700 - 1)	680 - 1 651 (700 - 1)	680 - 1 3/4 651 (700 - 1 3/4)	760 - 2 1/4 731 (800 - 2 1/4)

* When ALS INOP, Increase CAT AB RVR to 55 VIS to 1 mile, CAT CD VIS to 1 3/4 mile.

Change : Amended chart symbols.

AERONAUTICAL DATA TABULATION

TACAN or VOR/DME approach to RWY 18 from COBET, WWOLF, TRASK, WYZRD	
Fix/point	Coordinates
TRASK(IAF)	35°35'21.9"N 126°43'26.5"E
BOREV	35°40'10.8"N 126°41'45.4"E
WWOLF(IAF)	35°56'25.7"N 126°55'01.0"E
WYZRD(IAF)	35°52'46.1"N 126°18'21.7"E
COBET(IAF)	36°14'38.8"N 126°36'15.0"E
JINRO(IF)	36°09'38.5"N 126°36'21.5"E
KIXIS(FAF)	35°59'55.7"N 126°36'34.1"E
D2.1 KUZ	-
RETAG	35°55'25.4"N 126°36'39.9"E
THR RWY 18	35°54'57.21"N 126°36'46.83"E

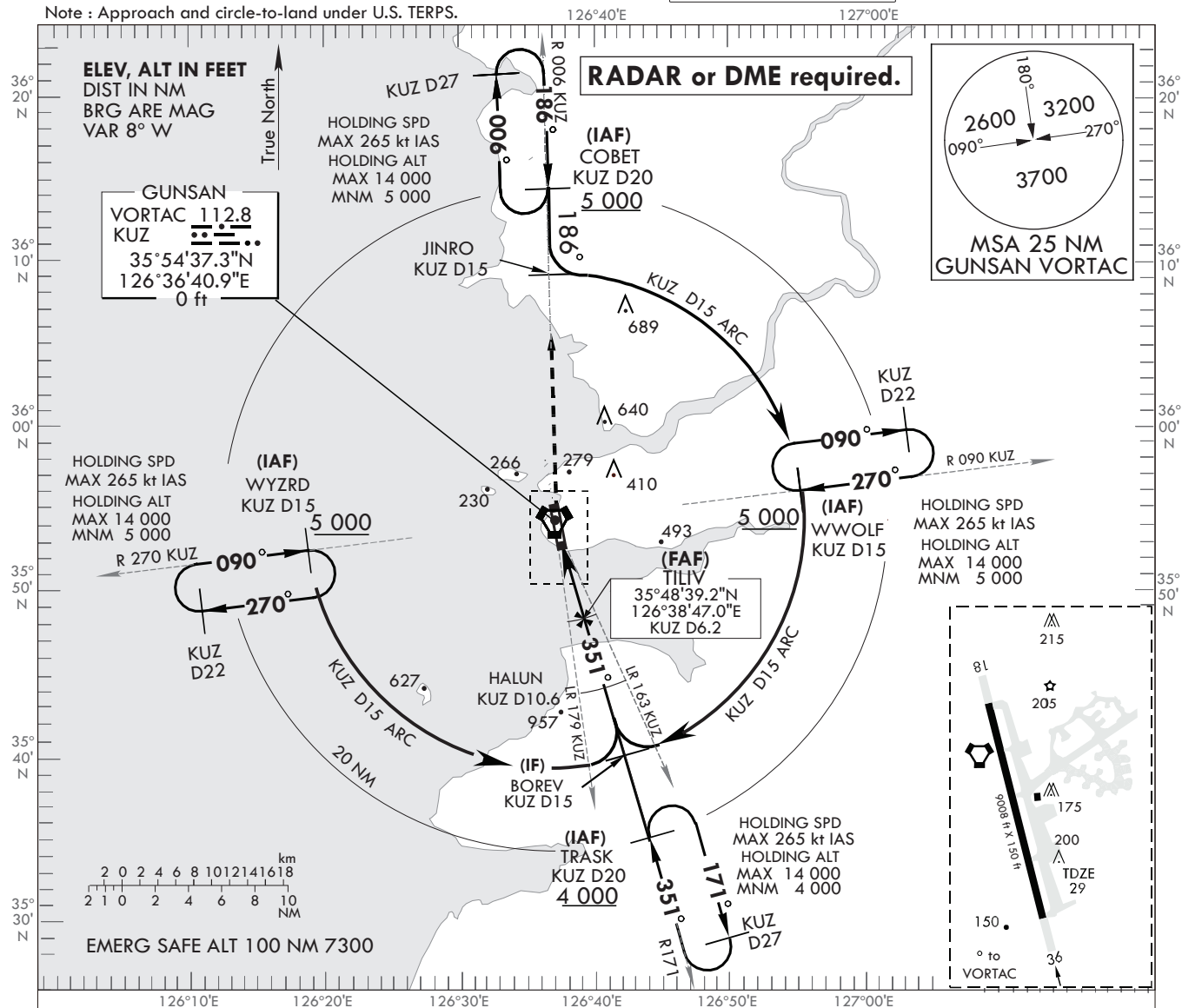
**INSTRUMENT
APPROACH
CHART**

AERODROME ELEV 29 ft
HIGHEST ELEV TDZ 29 ft

APP 124.1 292.65
TWR 126.5 292.3

GUNSAN/Gunsan(RKJK)
TACAN or VOR/DME
RWY 36

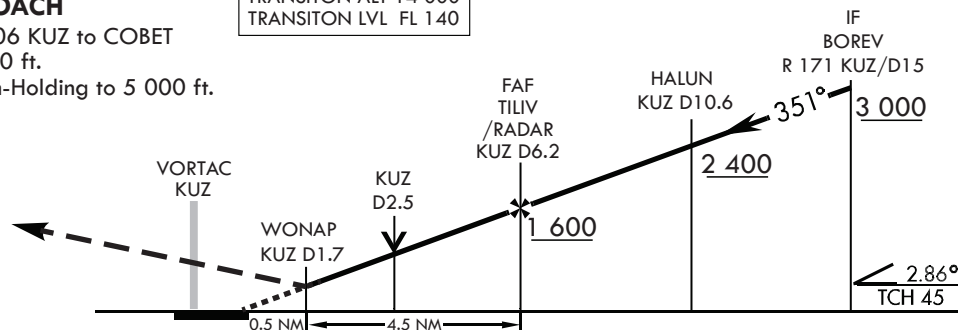
Note : Approach and circle-to-land under U.S. TERPS.



MISSED APPROACH

Intercept the R 006 KUZ to COBET
and hold at 5 000 ft.
Continue Climb-in-Holding to 5 000 ft.

TRANSITION ALT 14 000
TRANSITION LVL FL 140



CATEGORY	A	B	C	D
S-36*	500 / 24 471 (500 - 1/2)		500 / 50 471 (500 - 1)	
CIRCLING	640 - 1 611 (700 - 1)	680 - 1 651 (700 - 1)	680 - 1 3/4 651 (700 - 1 3/4)	760 - 2 1/4 731 (800 - 2 1/4)

* When ALS INOP, increase CAT AB RVR to 55 VIS to 1 mile, CAT CD VIS to 1 3/8 miles.

Change : Amended chart symbols.

AERONAUTICAL DATA TABULATION

TACAN or VOR/DME approach to RWY 36 from COBET, WWOLF, TRASK, WYZRD	
Fix/point	Coordinates
COBET(IAF)	36°14'38.8"N 126°36'15.0"E
JINRO	36°09'38.5"N 126°36'21.5"E
WWOLF(IAF)	35°56'25.7"N 126°55'01.0"E
WYZRD(IAF)	35°52'46.1"N 126°18'21.7"E
TRASK(IAF)	35°35'21.9"N 126°43'26.5"E
BOREV(IF)	35°40'10.8"N 126°41'45.4"E
HALUN	35°44'25.0"N 126°40'16.3"E
TILIV(FAF)	35°48'39.2"N 126°38'47.0"E
D2.3 KUZ	-
WONAP	35°52'59.1"N 126°37'15.5"E
THR RWY 36	35°53'29.83"N 126°37'07.61"E

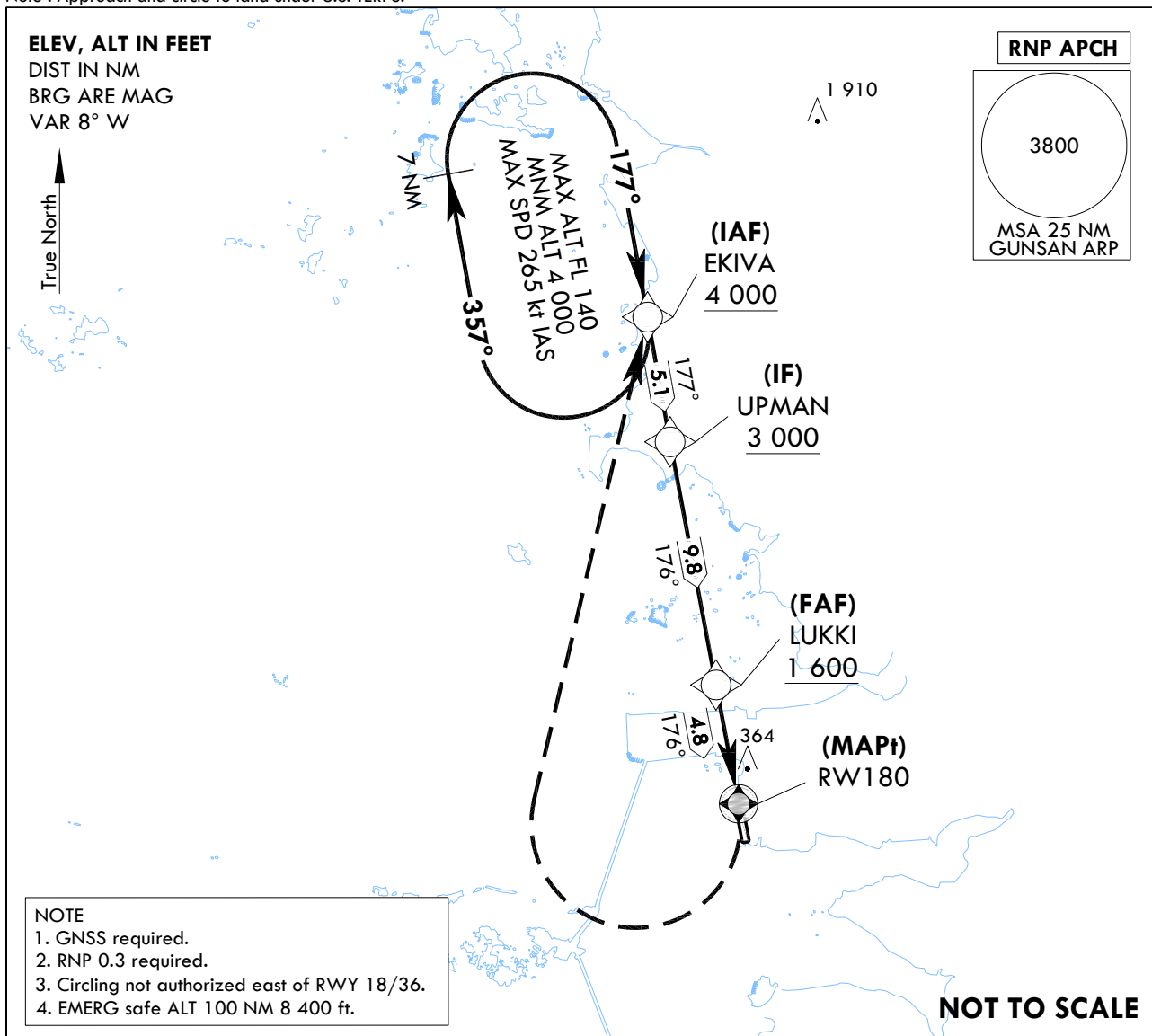
**INSTRUMENT
APPROACH
CHART**

AERODROME ELEV 30 ft
HEIGHTS RELATED TO
THR RWY 18 - ELEV 17 ft
HIGHEST ELEV TDZ 20 ft

GUNSAN APP 124.1 292.65
GUNSAN TWR 126.5 292.3

GUNSAN/Gunsan(RKJK)
RNP RWY 18

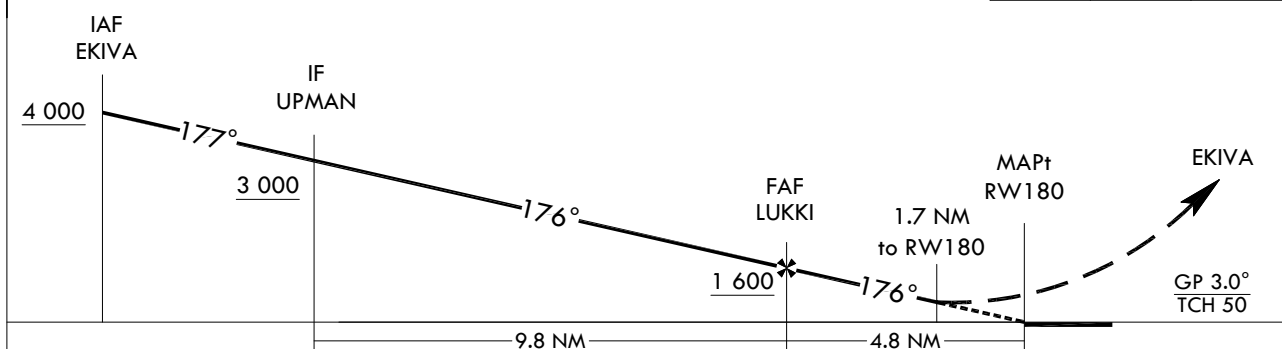
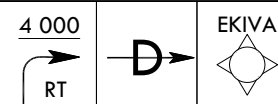
Note : Approach and circle to land under U.S. TERPS.



MISSED APPROACH

Climbing right hand turn to 4 000 ft direct EKIVA and hold.

TRANSITION ALT 14 000
TRANSITION LVL FL 140



CATEGORY		A	B	C	D	E
LNAV /VNAV	FULL	N/A				
	ALS INOP					
LNAV	FULL	620-24	600(600-1/2)	620-1 1/4 600(600-1 1/4)		
	ALS INOP	620-55	600(600-1)	620-1 3/4 600(600-1 3/4)		
CIRCLING		620-1	590(600-1)	640-1 3/4 610(700- 1 3/4)	640-2 610(700-2)	740-2 1/2 710(800-2 1/2)

Change : Amended chart symbol.

AERONAUTICAL DATA TABULATION

Instrument Approach Procedure Coding Tables

RNP RWY 18

Serial Number	Path Descriptor	Waypoint Identifier	Fly-over	Course/Track M(T)	Distance (NM)	Turn direction	Altitude (ft)	Speed (kt)	Coordinates	VPA/ TCH	Navigation Specification	Remarks
001	IF	EKIVA	-	-	-	-	+4 000	-	36°14'19.0" N 126°32'13.0" E	-	RNP APCH	IAF
002	TF	UPMAN	-	177(168.9)	5.1	-	+3 000	-	36°09'21.0" N 126°33'21.0" E	-	RNP APCH	IF
003	TF	LUKKI	-	176(167.9)	9.8	-	+1 600	-	35°59'41.0" N 126°35'39.0" E	-	RNP APCH	FAF
004	TF	RW180	Y	176(167.9)	4.8	-	-	-	35°54'57.3" N 126°36'46.8" E	-3.00/50	RNP APCH	MAPt
005	DF	EKIVA	-	-	-	-	-	-	36°14'19.0" N 126°32'13.0" E	-	RNP APCH	-
006	HM	EKIVA	-	177(168.9)	7.0	R	-FL 140 +4 000	-265	36°14'19.0" N 126°32'13.0" E	-	RNP APCH	HOLDING 7 NM LEG

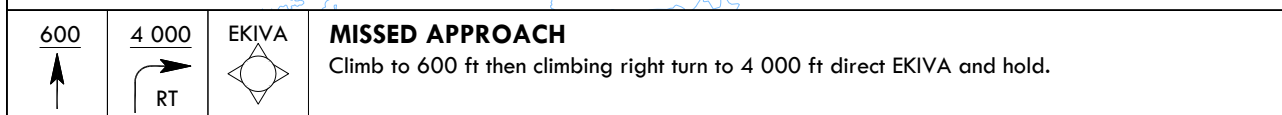
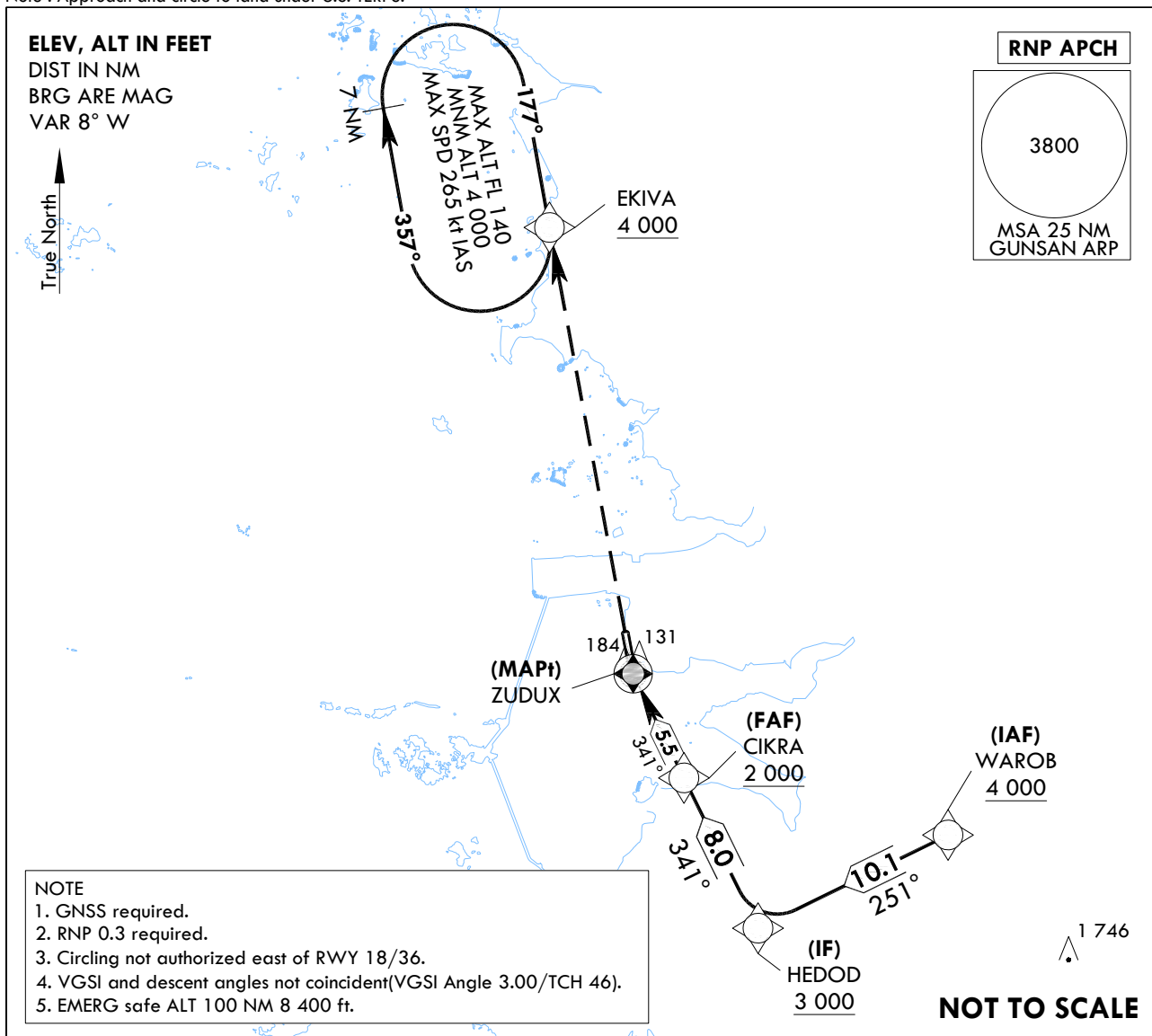
**INSTRUMENT
APPROACH
CHART**

AERODROME ELEV 30 ft
HEIGHTS RELATED TO
THR RWY 36 - ELEV **27 ft**
HIGHEST ELEV TDZ **30 ft**

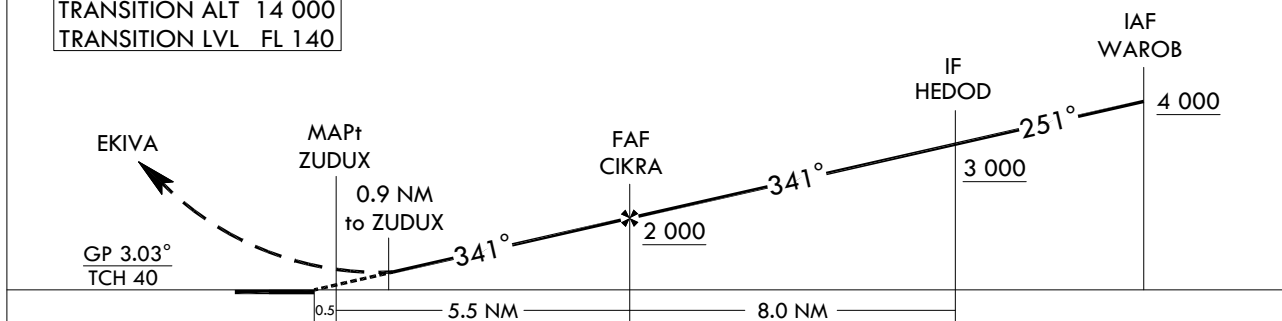
GUNSAN APP 124.1 292.65
GUNSAN TWR 126.5 292.3

GUNSAN/Gunsan(RKJK)
RNP RWY 36

Note : Approach and circle to land under U.S. TERPS.



TRANSITION ALT 14 000
TRANSITION LVL FL 140



CATEGORY		A	B	C	D	E
LNAV /VNAV	FULL	N/A				
	ALS INOP					
LNAV	FULL	500/24 470(500-1/2)		500/50 470(500-1)		
	ALS INOP	500/55 470(600-1)		500-1 3/8 470(500-1 3/8)		
CIRCLING		540-1 510(600-1)		640-1 3/4 610(700-1 3/4)	640-2 610(700-2)	740-2 1/2 710(800-2 1/2)

Change : Amended chart symbol.

AERONAUTICAL DATA TABULATION

Instrument Approach Procedure Coding Tables

RNP RWY 36

Serial Number	Path Descriptor	Waypoint Identifier	Fly-over	Course/Track M(T)	Distance (NM)	Turn direction	Altitude (ft)	Speed (kt)	Coordinates	VPA/TCH	Navigation Specification	Remarks
001	IF	WAROB	-	-	-	-	+4 000	-	35°45'21.0" N 126°55'44.0" E	-	RNP APCH	IAF
002	TF	HEDOD	-	251(242.9)	10.1	-	+3 000	-	35°40'53.0" N 126°44'37.0" E	-	RNP APCH	IF
003	TF	CIKRA	-	341(332.9)	8.0	-	+2 000	-	35°48'03.0" N 126°40'15.0" E	-	RNP APCH	FAF
004	TF	ZUDUX	Y	341(332.9)	5.5	-	-	-	35°53'01.0" N 126°37'15.0" E	-3.03/40	RNP APCH	MAPt
005	VA	TP600	-	-	-	-	+600	-	-	-	RNP APCH	-
006	DF	EKIVA	-	-	-	-	-	-	36°14'19.0" N 126°32'13.0" E	-	RNP APCH	-
007	HM	EKIVA	-	177(168.9)	7.0	R	-FL 140 +4 000	-265	36°14'19.0" N 126°32'13.0" E	-	RNP APCH	HOLDING 7 NM LEG